

⚠ WARNING

- Not for children under 6 years. Keep out of reach of very young children.
- USE UNDER ADULT SUPERVISION. Adult supervision is required when children are playing with water.
- AVOID DIRECT CONTACT WITH EYES. In case of direct contact with eyes, rinse immediately with plenty of water and seek medical advice.
- **ONLY THE RAINBOW HIGHLIGHTER IS FOR COSMETIC USE. Do not apply any of the other contents on yourself.**
- Cosmetics are for external use only.
- Do not use cosmetics on broken skin.
- As with all cosmetics, some individual skin types may experience minor skin irritation. If this occurs, discontinue use.
- Do not apply product to furniture, pets, etc.
- Do not eat any of the cosmetics or contents included in this package.
- Do not inhale the contents included in this kit.
- Wash hands before and after using cosmetics.
- When using the **HIGHLIGHTER**, avoid direct contact with the eyes.
- Once opening the highlighter makeup packet, apply to the face. Discontinue use if it has been left opened for a long period of time or if it has gotten dirty.

IMPORTANT INFORMATION

- Keep slime away from paper surfaces, as it will stick permanently.
- Color transfer from pigments may occur. Wash hands thoroughly after use and keep slime away from clothing and surfaces other than the bottle, doll's garment, shoes and purse.
- Keep contents away from eyes, mouth and face.
- Keep cosmetics away from clothing and other surfaces, as pigment transfer may occur.
- Tightly close the purse, shoes and garments when storing the slime to prevent spillage.
- Slime will dry out over time. Store in a sealed container to prevent drying out easily when not in use.
- Do not dispose of slime in the drain. Dispose in a trash receptacle once you are finished playing with it.
- Water temperature may affect the slime's consistency. Do not use hot water.
- Clean the bottle with water. Rinse thoroughly and air dry in a well-ventilated area.
- To clean garments, rinse with water and use a paper towel to dry the inside. Allow it to completely air dry before storing.
- Do not wash doll's hair with water and/or soap. Do not dry with a hair dryer or subject hair to very high heat in any manner, as it will irreparably damage the hair.
- Remove cosmetics with warm water and mild soap.
- Rainbow highlighter can also be added to the slime.

Please keep this manual as it contains important information.



0220-0-E
Printed in China

WWW.RAINBOWHIGH.COM
©2020 MGA Entertainment, Inc.
RAINBOW HIGH™ and RAINBOW SURPRISE™ are trademarks of MGA in the U.S. and other countries. All logos, names, characters, likenesses, images, slogans, and packaging appearance are the property of MGA.

9220 Winnetka Ave.
Chatsworth, CA 91311 U.S.A.
(800) 222-4685

The preferred method of contact for Customer Service is through our e-mail contact form at www.mgae.com

#COLLECTTHERAINBOW

RAINBOW
HIGH™

RAINBOW SURPRISE™

Age 6+

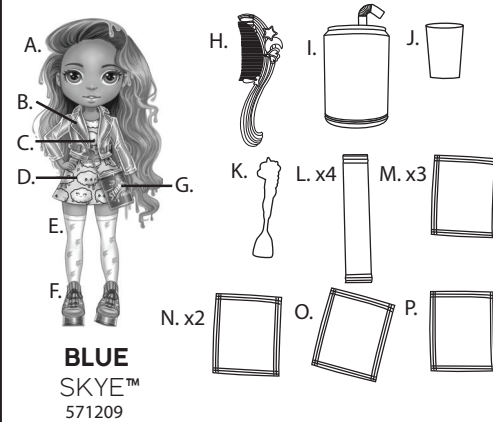
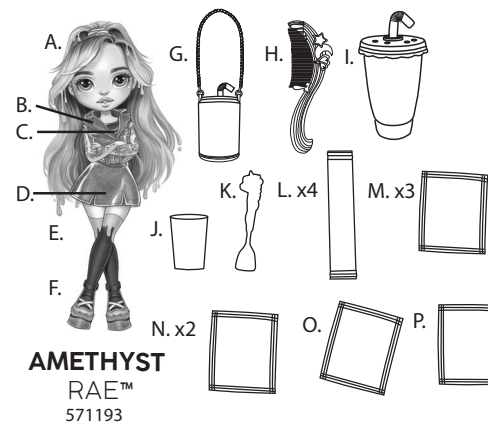
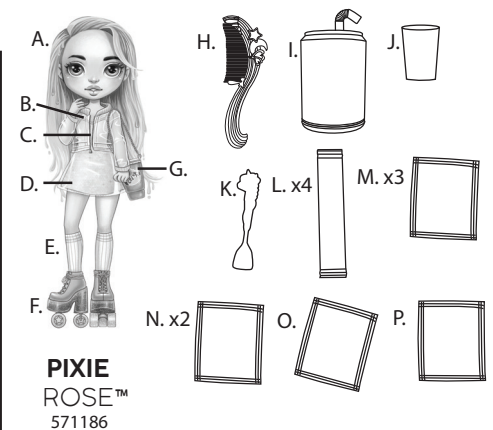
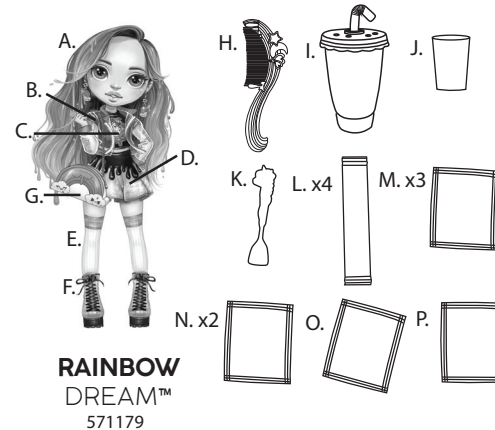
⚠ WARNING:
CHOKING HAZARD—Small parts.
Not for children under 3 years.

ADULT SUPERVISION REQUIRED

SKUs: 571179, 571186, 571193, 571209

CONTENTS

- | | | |
|----------------------------|-------------------------|---|
| A. 1 Doll | F. 1 Pair of Shoes | K. 1 Unicorn Spoon |
| B. 1 Jacket or Vest | or Roller Skates | L. 4 Packets of Rainbow Surprise™ (Slime Powder) |
| C. 1 Top | G. 1 Purse | M. 3 Packets of Rainbow Shimmer (Glitter Powder) |
| D. 1 Skirt or Dress | H. 1 Comb | N. 2 Packets of Rainbow Magic (Special Effect Powder) |
| E. 1 Pair of Socks | I. 1 Bottle with Lid | O. 1 Packet of Rainbow Sparkle (Die Cut Glitter) |
| | J. 1 Measuring Cup | P. 1 Packet of Rainbow Highlighter (Makeup) |

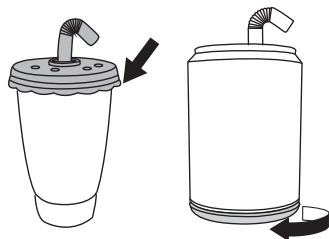


Each sold separately.

Illustrations are for reference only. Styles may vary from actual contents.

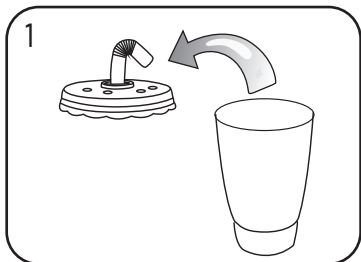
OPEN YOUR BOTTLE

NOTE: Each bottle opens differently. Find your bottle shape to see how to open it:

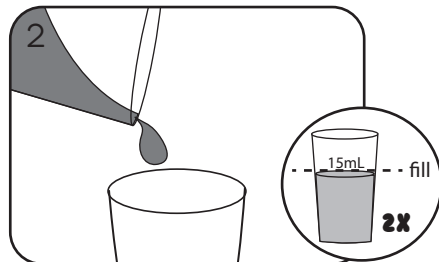


MAKE DIY SLIME FASHION

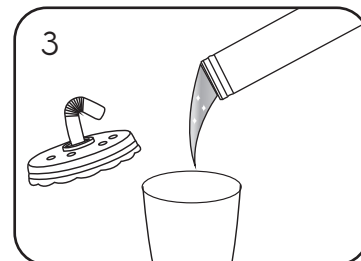
Before beginning, cover the play area to prevent possible damage.



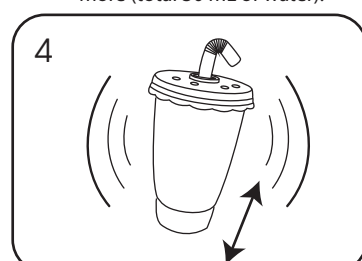
Remove the lid from the included bottle.



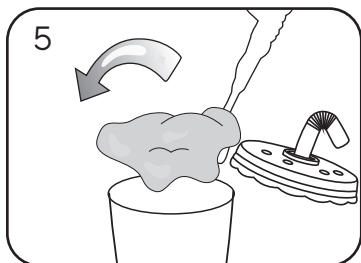
Fill the measuring cup to the fill line marked 15 mL with water, and pour it into bottle. Then, fill and repeat once more (total 30 mL of water).



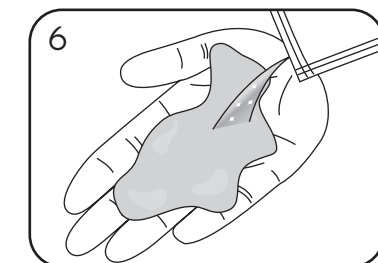
Tear open one Rainbow Surprise™ packet and pour the powder into the bottle.



Tightly replace the lid on the bottle. Then, hold the lid, and rapidly shake the bottle up and down for 1 minute. Let the mixture sit for 10-15 minutes to allow the slime to harden.

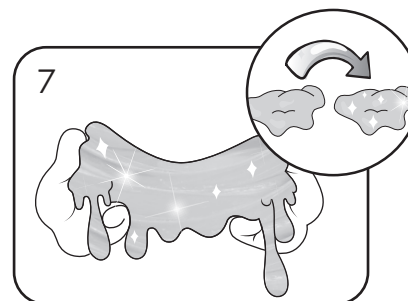


Open the lid and use the unicorn spoon to remove the slime from the bottle.

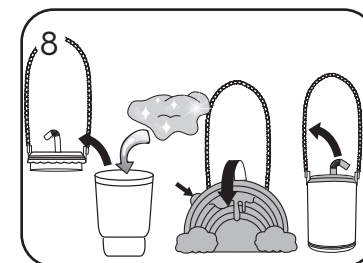


Tear open the rainbow magic packet. Hold the slime in the palm of one hand, then use your other hand to pour the powder onto the center of the slime. Add unicorn magic a little at a time.

NOTE: Tear open the rainbow sparkle and/or rainbow shimmer to add it in this step.

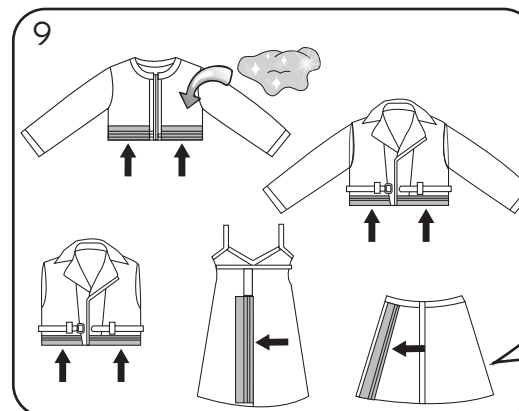


Fold the slime in half and continue folding and pulling the slime until all the powder is thoroughly blended into the slime. Your slime will change to a surprise color!

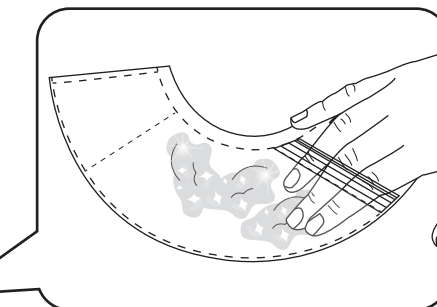


Open the purse to store your slime. Tightly replace the cover after pouring the slime.

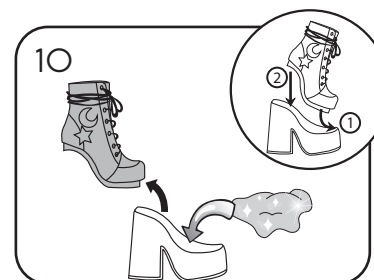
Bottles: The tops will come off.
Rainbow Bag: Pull on the tab and swing the cover down.



Locate the seal on the garment and open it to add the slime. Then, tightly close the seal to prevent spilling. If you have the dress or skirt, the seal is located on the back. Doll's arms can move in any direction to fashion the doll.



Use your fingers to push the slime into the garment.



Remove the top half of the shoe to detach from the heel. Store the slime in the heel. When replacing, slide the tip of the shoe first and then insert the back.

RAINBOW HIGHLIGHTER



Tear open the rainbow highlighter packet and, using your fingers, apply to your face.

• **Avoid direct contact with the eyes.**
• **Wash hands before and after applying cosmetics to your face.**